

LARGE ITEM REMOVAL

*Starting January 1st, 2019

Residents must call Johns Disposal at (262) 473-4700 to schedule a special pick up for large items. Residents get **one free** special pick up per month. Multiple items can be put out at one time for each pick up.

Special pick ups may include:

- Appliances
- Sofa, mattress, chair
- Rolled carpeting in 4' lengths
- Extra bagged garbage
- Motor oil, antifreeze, car batteries

UNACCEPTABLE BULK ITEMS

- Yard waste
- Electronics
- Hazardous materials
- Liquid paint
- Loose construction material

YARD WASTE

Curbside yard waste collection is not provided by Johns. Residents can bring their yard waste to drop off in the dumpster at Johns: 107 Cty Hwy U, Whitewater, WI.

WISCONSIN E-CYCLE

Johns Disposal is a registered collector of electronics for the state of Wisconsin. We would be happy to pick up your electronics for a fee. Please call Johns Disposal to make arrangements.

For more information visit:
dnr.wi.gov/ecyclewisconsin.



OFFICE HOURS

Monday - Friday
8:00am - 4:30pm
Saturday 8:00am - 12:00pm

Service provided by:
Johns Disposal Service, Inc.
107 Co Rd U,
Whitewater, WI 53190

(262)-473-4700
(888)-473-4701

www.johnsdisposal.com
office@johnsdisposal.com

Revised 1/9/2022

Town of Cold Spring

Automated Garbage & Recycling Program



Whitewater & Franksville, WI

BROWN CART GARBAGE EVERY WEEK

PLEASE PLACE IN THE BROWN CART

MIXED TRASH

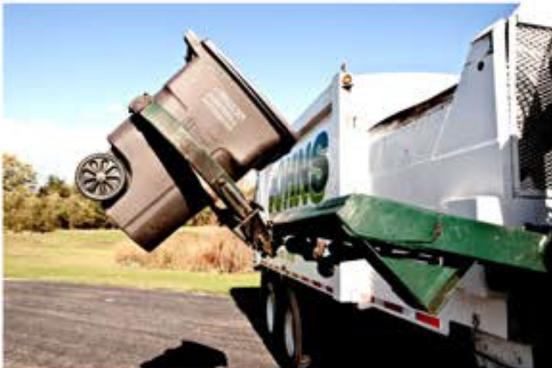
- Plastic wrap
- Plastic bags
- Broken toys
- Ceramics
- Light bulbs
- Food waste
- Styrofoam
- Other household trash

Making sure trash bags are tied before putting them in the brown cart will help to keep the carts clean.

DO NOT PUT THE FOLLOWING ITEMS IN THE BROWN CART

- Yard waste
- Recyclables
- Household hazardous waste
- Cardboard boxes
- Construction materials
- Electronics

Local clean sweep programs may offer alternative options for disposal of fluorescent light bulbs, household hazardous waste, pharmaceuticals and electronics.



CART PLACEMENT

The arrows on the lid of the cart must point to the street.

Handles and wheels should face away from the street.

The garbage cart should be placed within 2ft. of the street on one side of the driveway at or before **6:00 am**.

The recycle cart should be placed within 2ft. of the street on the other side of the driveway at or before **6:00 am**.

Please keep 6ft. of clearance between the carts and other objects, especially mailboxes and vehicles.



Whitewater & Franksville, WI

(262)-473-4700
(888)-473-4701

Family owned and operated since 1969



PLEASE PLACE IN THE GREEN CART

MIXED CONTAINERS

- Aluminum cans
- Clean aluminum foil
- Tin cans
- Steel cans
- Aerosol cans
- Empty/dried paint cans
- Glass bottles, jars
- #1-7 plastic
- Milk cartons, juice boxes, soup cartons

MIXED PAPER

- Newspaper
- Magazines
- Books
- Mail
- School/office paper
- Brown corrugated cardboard
- Gray chipboard (cereal & shoe boxes)
- Brown paper bags

SHREDDED PAPER

Please put in a secured clear plastic bag, and place in the GREEN cart. No other recycling should be placed in bags.

DO NOT PUT THE FOLLOWING ITEMS IN THE GREEN CART

- Styrofoam of any kind
- Yard waste
- Trash
- Household hazardous waste
- Construction materials
- Electronics
- Clothing